



## Industrial Collection



## Contents

### About Us

### Why Choose Us?

#### Industrial Collection

Reflective Coverall

Fire-Retardant Coverall

Pop Coverall

Double-layer Sleeve Welding Jacket

Reflective Industrial Jacket

Fire-Retardant Industrial Jacket

Fire-Retardant Industrial Pants

Size Chart

### Contact Us



## About Sowbread

Sowbread Style Pte Ltd was established in Singapore in 2006. We provide a one-stop service ranging from designing and customizing corporate apparel to factory uniforms. We currently own several manufacturing facilities overseas in order to provide our customers the highest quality apparels with the best value.

We have a highly-efficient and effective quality check system in place that is controlled and monitored in Singapore to provide a speedy and reliable after-sales service.

It is with our excellent customer service and superior apparel quality that keeps our customers happy and continuing to supply us with repeat orders.









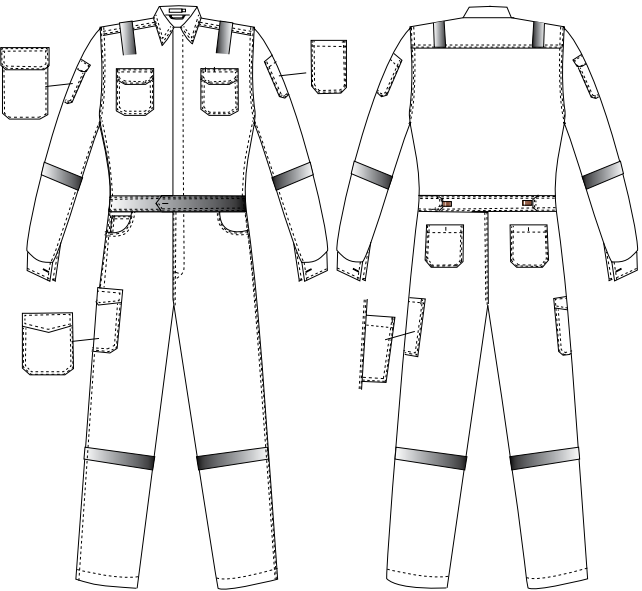
# Industrial Collection

## Reflective Coverall

**Fabric Information:** 100% Preshrunk Cotton or 65% Polyester, 35% Cotton  
**Features:** 11 Pockets, All Stress-Seams are Bartacked for Reinforced Strength  
**Weave:** 2/2 Twill  
**Weight:** 200g/m<sup>2</sup>, 220g/m<sup>2</sup>, 250g/m<sup>2</sup>

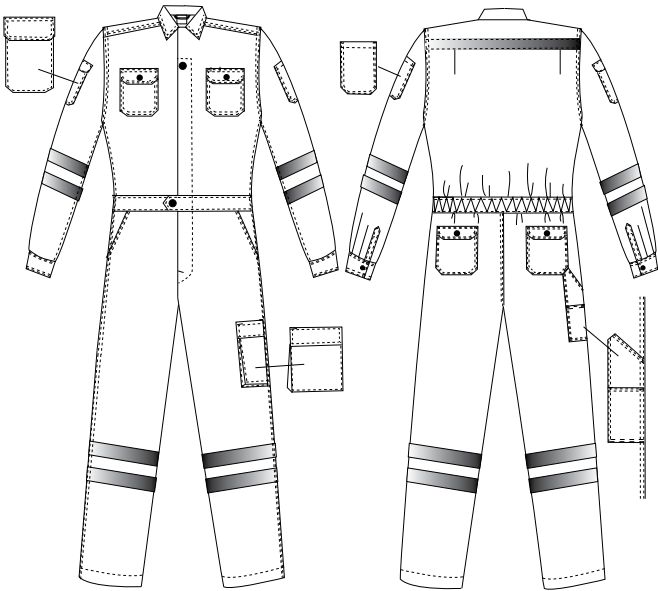
**Additional Info:**     

**Colours:**     



Coverall Reflective Style 1

- velcro flap tool pocket on right leg
- multiple tool pockets on sleeves
- concealed two-way, heavy-duty zip with snap closure
- 2 velcro flap chest pockets
- 2-side adjustable velcro waistband
- 2 back button pockets
- 2 side pockets
- right inner pocket
- 2-inch wide silver reflective tape at waist, arms and legs



Coverall Reflective Style 2

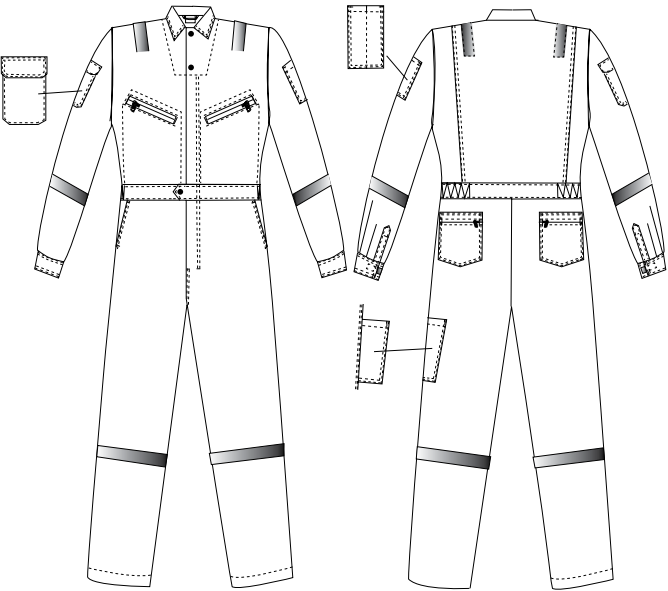
- snap button flap pocket on left leg
- multiple tool pockets on sleeves
- accordion pocket on left leg
- tool pocket on right leg
- concealed two-way, heavy-duty zip on the front
- 2 chest pockets closed by metal snap button flap
- adjustable velcro waistband at the back
- 2 back pockets closed by metal snap button flap
- 2 side pockets
- 2-inch wide silver reflective tape at waist, arms and legs

## Fire-Retardant Coverall

**Fabric Information:** 100% Cotton, Preshrunk, Finished with Pyrovatex Flame Retardant or Frecotex Flame Retardant and Nomex 111a  
**Accessories:** Flame Retardant Silver 120 Reflective, Retardant Brass Zip and Thread  
**Features:** 10 Pockets, All Stress-Seams are Bartacked for Reinforced Strength, 100% Brass Press Studs Covered on the inside, no brass connects directly to skin  
**Weight:** 200g/m<sup>2</sup>, 260g/m<sup>2</sup>, 340g/m<sup>2</sup>

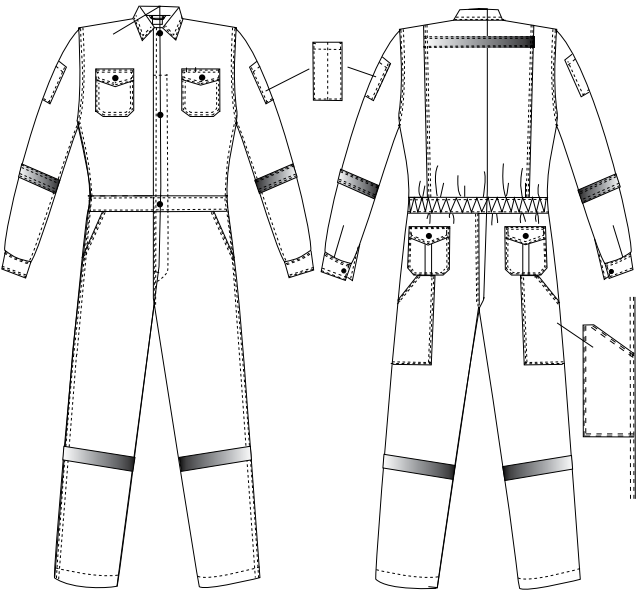
**Additional Info:**       

**Colours:**    



Coverall FR Style 1

- 2 concealed chest pockets with zip closure
- gas detector and pen pocket on left sleeve
- velcro flap tool pocket on right sleeve
- adjustable velcro on cuffs
- large pleats in the back for freedom of movement and comfort
- 2 back pockets with zip closure
- tool pocket on right leg
- 2-way concealed front zip
- 2 side pockets have exterior-to-interior access through the pocket lining
- 2-inch wide silver fire retardant reflective tape on shoulder, arms and legs



Coverall FR Style 2

- 2 brass snap button flap pockets on chest and back
- tool pocket on both legs and sleeves
- concealed 2-way, heavy-duty zip with 3 snap button closure
- 2 pleats at back for comfortable action
- adjustable waistband at the back
- 2 side pockets
- 2-inch wide silver fire retardant reflective tape at back, legs and arms

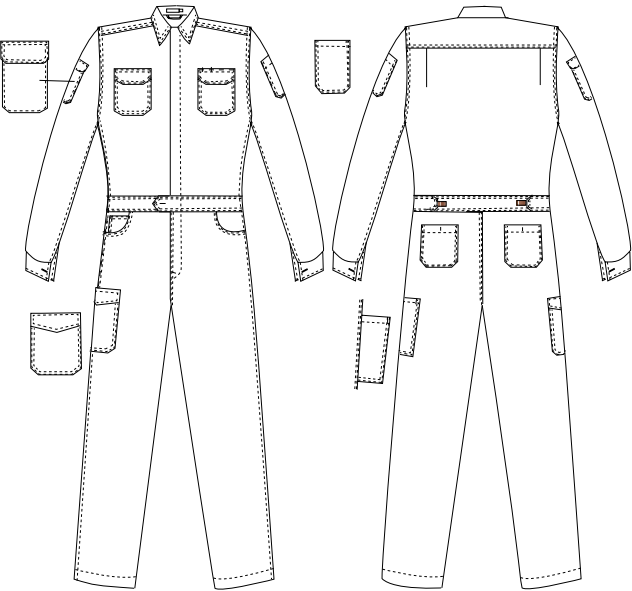
# Industrial Collection

## Pop Coverall

**Fabric Information:** 100% Preshrunk Cotton or 65% Polyester, 35% Cotton  
**Features:** 11 Pockets, All Stress-Seams are Bartacked for Reinforced Strength  
**Weave:** 2/2 Twill  
**Weight:** 200g/m², 220g/m², 250g/m²

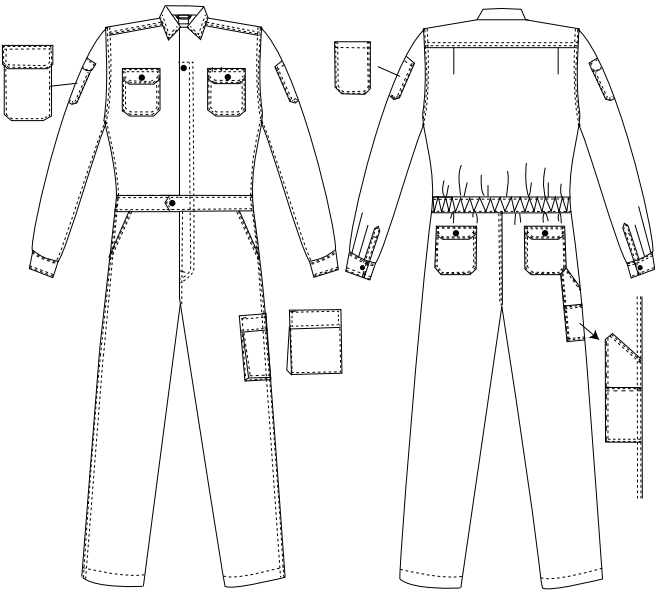
**Additional Info:**    

**Colours:**     



Coverall Pop Style 1

- multiple tool pockets on sleeves and legs
- concealed 2-way, heavy-duty zip with snap closure
- 2 velcro flap chest pockets
- adjustable velcro panel waistband
- 2 back button pockets
- 2 side pockets and inner pocket on the right side



Coverall Pop Style 2

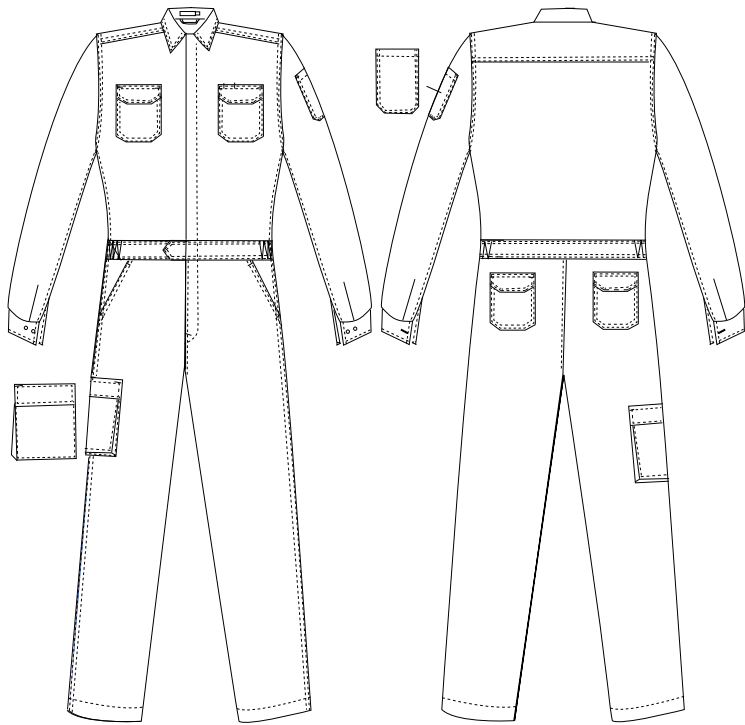
- snap button pocket on left leg
- tool pocket on right leg and left arm
- concealed 2-way, heavy-duty zip with snap
- 2 metal snap button flap chest pockets
- adjustable velcro waistband at the back
- 2 metal snap button flap back pockets
- 2 side pockets

## Pop Coverall

**Fabric Information:** 100% Preshrunk Cotton or 65% Polyester, 35% Cotton  
**Features:** 11 Pockets, All Stress-Seams are Bartacked for Reinforced Strength  
**Weave:** 2/2 Twill  
**Weight:** 200g/m², 220g/m², 250g/m²

**Additional Info:**    

**Colours:**     



Coverall Pop Style 3

- tool velcro flap accordion pocket on right leg
- tool pocket on left arm
- concealed 2-way, heavy-duty zip with snap
- 2 velcro flap chest pockets
- elastic waistband on both sides
- 2 velcro flap back pockets
- 2 side pockets

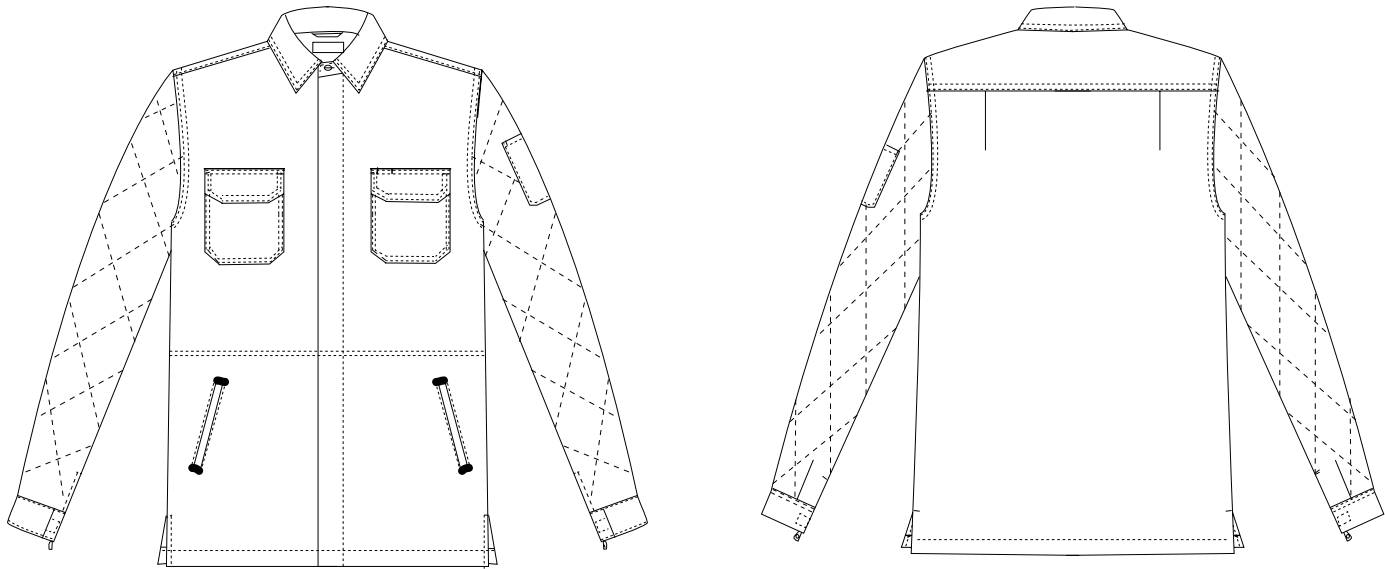
# Industrial Collection

## Double Layer Sleeve Welding Jacket

**Fabric Information:** 100% Preshrunk Cotton  
**Features:** 5 Pockets, All Stress-Seams are Bartacked for Reinforced Strength  
**Weave:** 2/2 Twill  
**Weight:** 240g/m<sup>2</sup>

**Additional Info:**    

**Colours:**     



### Double Layer Sleeve Welding Jacket

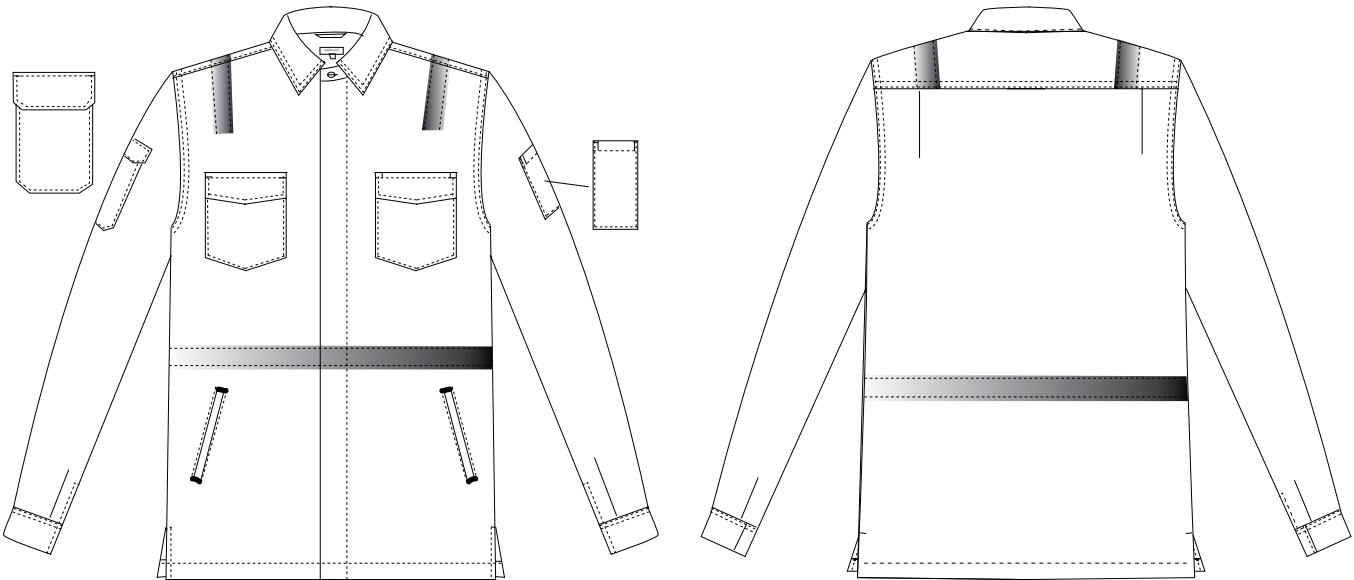
- tool pocket on left arm
- concealed zip on front fly for closure
- 2 chest pockets with flap
- 1 pen hole on left side
- 2 set-in pockets below
- sleeve slip with zip closure
- velcro sleeve cuff overlap
- double layer in sleeve to increase protection

## Reflective Industrial Jacket

**Fabric Information:** 100% Preshrunk Cotton, With or Without Reflective  
**Features:** 6 Pockets, All Stress-Seams are Bartacked for Reinforced Strength  
**Weave:** 2/2 Twill  
**Weight:** 240g/m<sup>2</sup>

**Additional Info:**     

**Colours:**     



### Reflective Industrial Jacket

- multiple tool pockets on sleeves
- concealed zip on front fly for closure
- 2 chest pockets with flap
- 1 pen hole on left side
- 2 set-in pockets below
- sleeve slip with zip closure
- velcro sleeve cuff overlap closed
- 2-inch wide silver reflective tapes on shoulders and waist

# Industrial Collection

## Fire Retardant Industrial Jacket

**Fabric Information:** 100% Cotton, Preshrunk, Finished with Pyrovatex Flame Retardant or Frecotex Flame Retardant

**Accessories:** Flame Retardant Silver 120 Reflective, Retardant Brass Zip and Thread

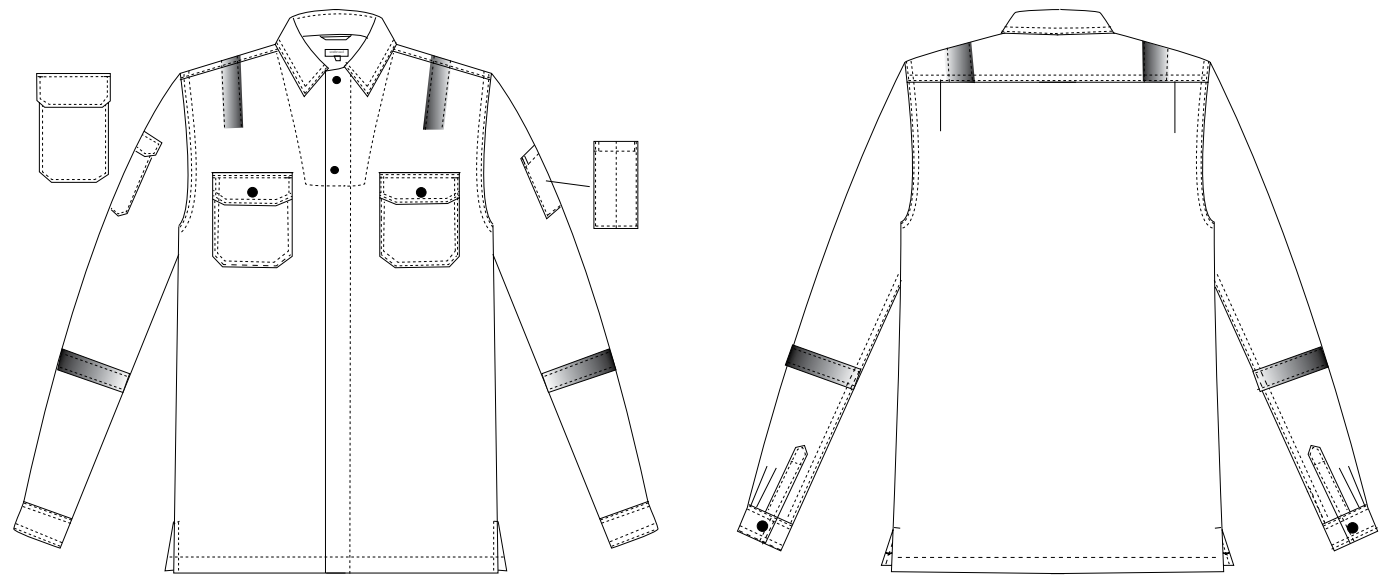
**Features:** 4 Pockets, All Stress-Seams are Bartacked for Reinforced Strength, 100% Brass Press Studs Covered on the inside, no brass connects directly to skin

**Weave:** 2/2 Twill

**Weight:** 200g/m<sup>2</sup>, 260g/m<sup>2</sup>

**Additional Info:**      

**Colours:**    



### Fire Retardant Industrial Jacket

- 2 brass snap button flap pockets on chest
- multiple tool pockets on sleeves
- concealed heavy-duty zip on front closure
- 2 pleats at back for comfortable action
- brass snap button sleeve cuffs overlap
- 2-inch wide silver fire retardant reflective tape at back, legs and arms







## Fire Retardant Industrial Pants







**Fabric Information:** 100% Preshrunk Cotton or 65% Polyester, 35% Cotton and FR Cotton

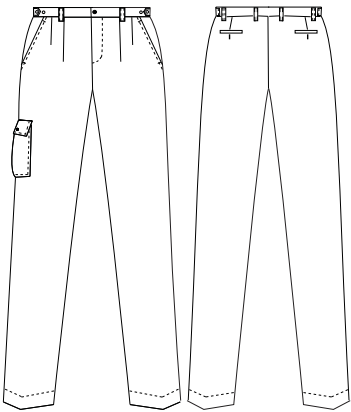
**Features:** 5 Pockets, All Stress-Seams are Bartacked for Reinforced Strength

**Weave:** 2/2 Twill

**Weight:** 200g/m<sup>2</sup>, 220g/m<sup>2</sup>, 250g/m<sup>2</sup>,

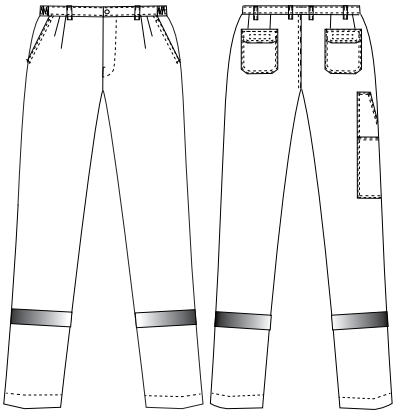
**Additional Info:**      

**Colours:**      



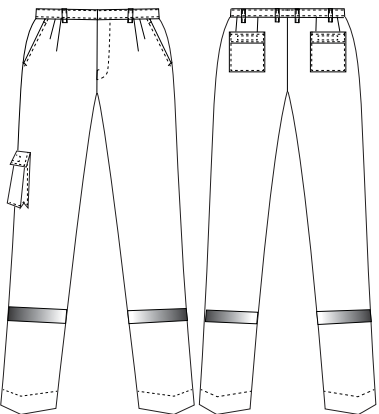
### Dungarees Pants

- 2 set-in pockets at back
- button flap pocket on right leg
- concealed zip under front fly
- 2 side pockets
- 6 belt loops on waistband
- 2 pleats on each front side
- adjustable patch at both sides of waistband



### Cargo Pants

- 2 velcro flap back pocket
- functional tool pocket on right leg
- concealed zip under front fly
- 2 side pockets
- 6 belt loops on waistband
- adjustable elastic waistband at sides
- 2 pleats on each front side
- 2-inch wide silver FR reflective tape on both legs



### Accordion Pants

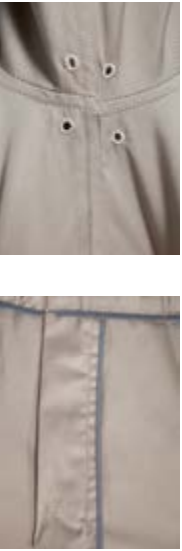
- 2 velcro flap back pocket
- accordion pocket with velcro flap and pen hole on right leg
- concealed zip under front fly
- 2 side pockets
- brass snap button sleeve cuffs overlap
- 6 belt loops on waistband
- 2 pleats on each front side



Industrial Collection

Safari | Fabric Information: Poplin, High-density Twill, 65% Polyester, 35% Viscose or 65% Polyester, 35% Cotton  
Features: Custom Colours, Colour-Fastness 3-4 Class

Colours:



Safari | Fabric Information: Poplin, High-density Twill, 65% Polyester, 35% Viscose or 65% Polyester, 35% Cotton  
Features: Custom Colours, Colour-Fastness 3-4 Class

Colours:



Industrial Collection

Safari | Fabric Information: Poplin, High-density Twill, 65% Polyester, 35% Viscose or 65% Polyester, 35% Cotton  
Features: Custom Colours, Colour-Fastness 3-4 Class

Colours:



Safari | Fabric Information: Poplin, High-density Twill, 65% Polyester, 35% Viscose or 65% Polyester, 35% Cotton  
Features: Custom Colours, Colour-Fastness 3-4 Class

Colours:





# Industrial Collection

**Safari** | **Fabric Information:** Poplin, High-density Twill, 65% Polyester, 35% Viscose or 65% Polyester, 35% Cotton  
**Features:** Custom Colours, Colour-Fastness 3-4 Class

Colours:



**Safari** | **Fabric Information:** Poplin, High-density Twill, 65% Polyester, 35% Viscose or 65% Polyester, 35% Cotton  
**Features:** Custom Colours, Colour-Fastness 3-4 Class

Colours:

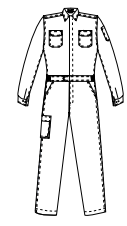


# Industrial Collection

## Size Charts

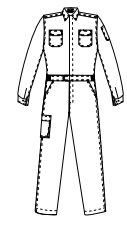
\*all measurements are in inches

### Coverall (Asia)



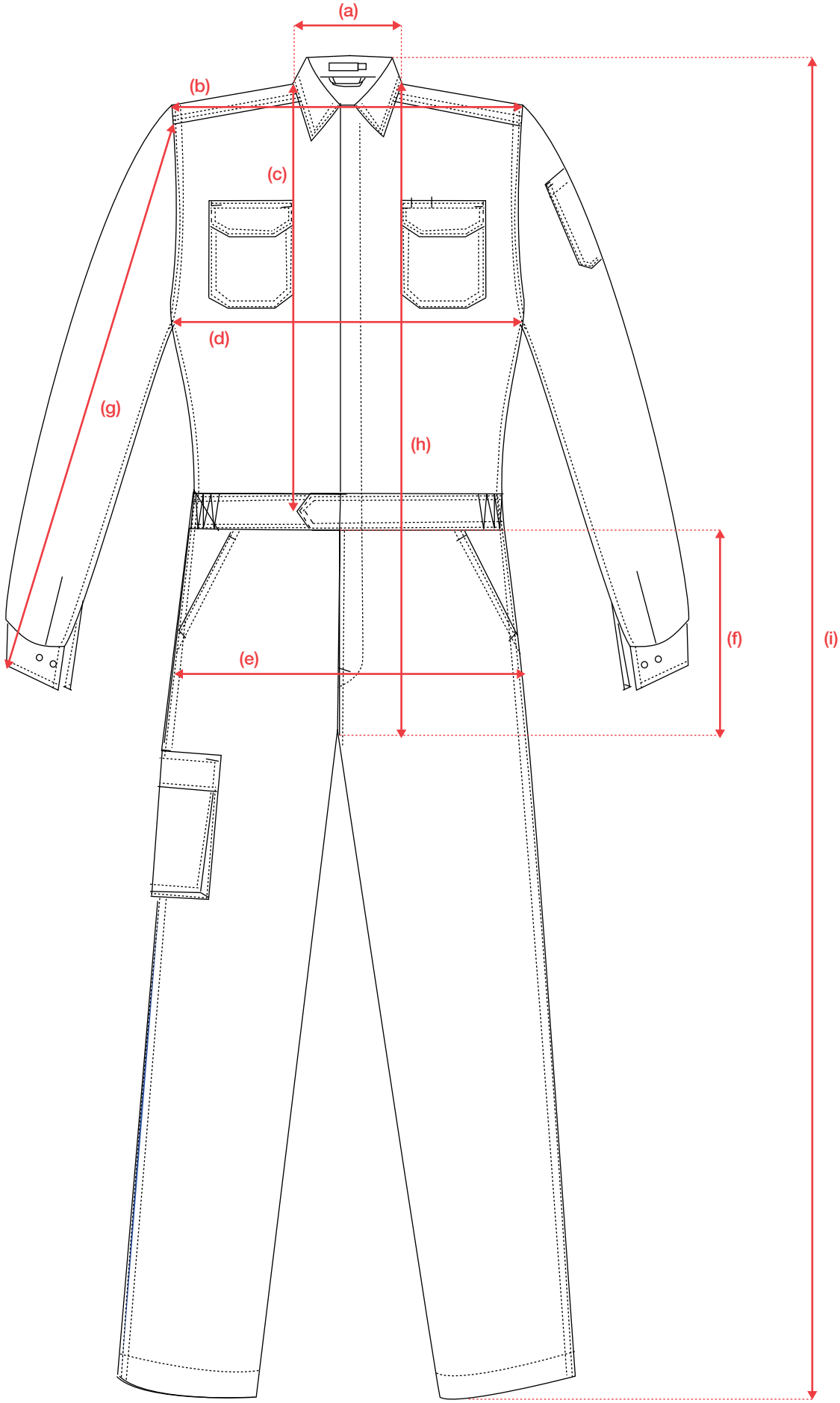
Size	S / 38	M / 40	L / 42	XL / 44	2XL / 46	3XL / 48	4XL / 50
Collar (a)	15.0	15.5	16.0	16.5	17.0	17.5	18.0
Shoulder (b)	18.0	19.0	19.5	20.0	20.5	21.0	22.0
Collar to Waist (c)	18.0	19.0	20.0	20.5	21.0	22.0	22.5
Chest (d)	42.0	44.0	46.0	48.0	50.0	52.0	54.0
Hip (e)	41.0	43.0	45.0	47.0	49.0	51.0	53.0
Trousers Height (f)	40.0	41.0	42.0	42.5	43.0	44.0	45.0
Sleeve (g)	22.0	22.5	23.0	23.5	24.0	24.5	24.5
Collar to Crotch (h)	30.5	31.5	32.5	33.5	34.5	35.5	36.5
Overall Length (i)	58.0	60.0	61.5	63.0	64.5	66.0	67.5

### Coverall (Europe)



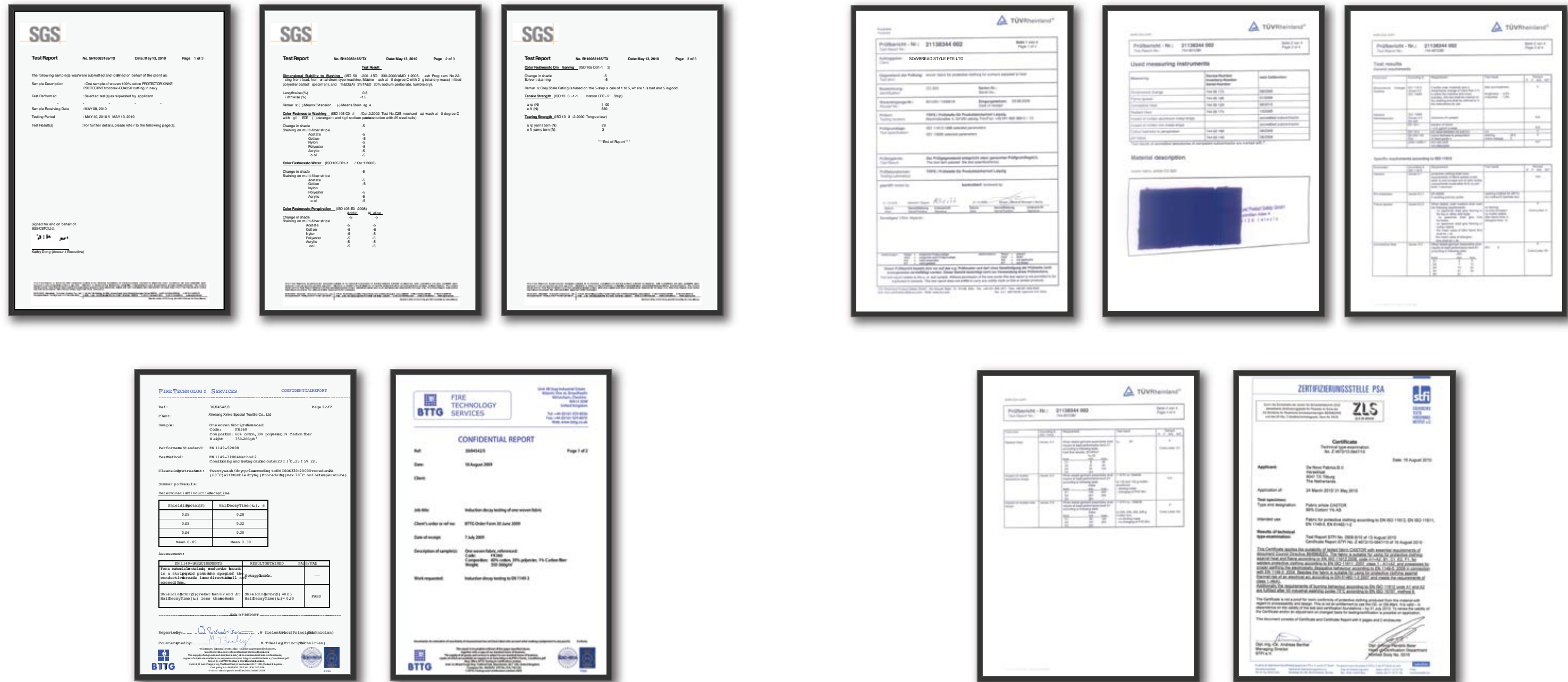
Size	S	M	L	XL	2XL	3XL	4XL
Label	36-38	40-42	44-46	48-50	52-54	56-58	60-62
Collar	15.5	16.0	16.5	17.0	17.5	18.0	18.0
Shoulder	18.0	19.0	20.5	21.5	22.5	23.5	24.5
Collar to Waist	19.0	19.5	20.5	21.0	21.5	22.0	22.5
Chest	40.0	44.0	48.0	52.0	56.0	60.0	64.0
Hip	40.0	42.0	46.0	50.0	54.0	58.0	62.0
Trousers Height	40.0	41.0	42.0	43.0	44.0	45.0	45.0
Sleeve	21.5	22.0	22.5	23.0	23.5	24.5	24.5
Collar to Crotch	31.0	31.5	32.5	33.5	34.5	35.5	36.5
Overall Length	59.0	60.5	62.5	64.0	65.5	67.0	67.5

## Colour Chart

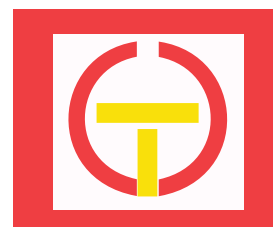




Fire Retardant Test Certificates



## Our Clients

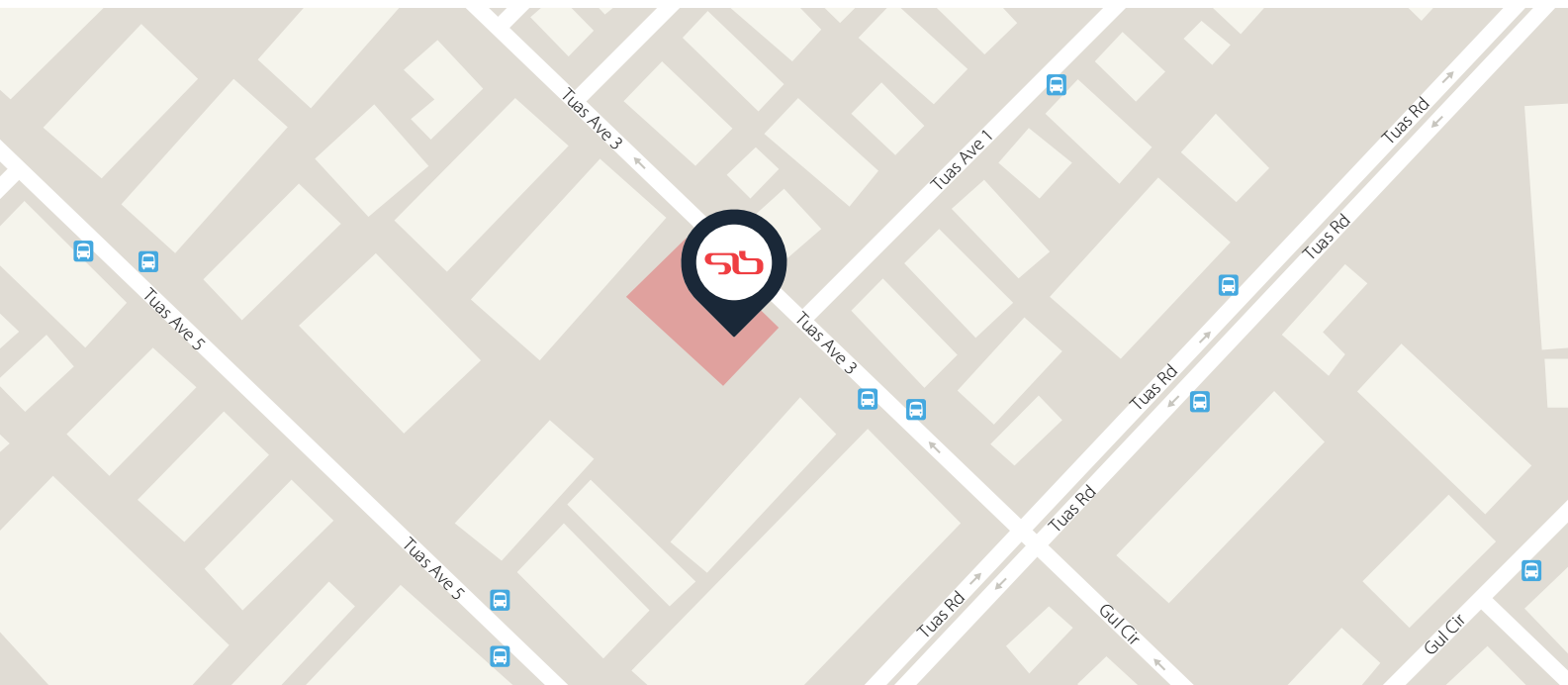




Our Clients



# Contact Us



## Sowbread Style Pte Ltd

No.5 Tuas Avenue 3, BS Logistics Hub, Singapore 639405

**T:** +65 6861 6607

**HP:** +65 9368 5857

**E:** enquiry@sowbreadstyle.com

**E:** sowbreadstyle@gmail.com

## How to get here

**MRT/Bus:** Take the train to Joo Koon (EW29), alight and walk to Bus Stop No. 23489 (Opp Molex).  
Board Bus Service 192 and alight 5 stops later at Bus Stop No. 25201 (Apls Bok Seng).

**Car/Taxi:** Please use the Tuas Avenue 3 entrance

